

Parc  
Jean-Drapeau

ESPACES

# Pavillon de la Jamaïque

Société du  
parc Jean-Drapeau



# Pavillon de la Jamaïque

Want to celebrate a wedding, organize a family get-together or a corporate event? Pavillon de la Jamaïque has everything you need to enjoy a memorable experience, in a charming setting, close to the downtown core.

Located in the heart of Île Notre-Dame in a wooded area amid the gorgeous Florales Gardens, this former pavilion dating back to Expo 67 has been completely renovated to provide you with the utmost in comfort and services. Its bright and spacious window arrangement and magnificent terrace afford a delightful view of the surrounding lagoons.

Pavillon de la Jamaïque will definitely make your event a major success in every sense of the word!

## Features

### Capacity

- 60 to 100 people in a banquet format
- 100 to 150 people in a cocktail format
- Cheerful industrial style
- Spacious wood-made urban bar
- Cloakroom
- Terraces set up with urban, wood-made furniture
- Exclusive use of the Italy Garden in the magnificent Florales, an ideal setting for a cocktail or wedding reception
- Accessible to all

**You can choose your own caterer and bring your own alcohol.** No supplier exclusivity or royalties. Application for a liquor permit must be made to the Régies des alcools, des courses et des jeux.



# Included

## Parking

- Parking area close to the hall
- 40 passes included with the hall rental and possibility of purchasing extra passes at the price in effect

## Indoor furniture

- 60-inch round tables (12)
- 96 in x 30 in. rectangular tables (8)
- 100 banquet chairs
- 24-inch cocktail tables (6)

## Outdoor furniture

- Permanent wood counters
- Terrace furniture
- (5 tables, 20 chairs and a modular sofa)
- 100 white chairs for the garden

## Catering and bar

- Service entrance for unloading material
- Spacious counter
- Sink
- Refrigerators
- Freezer
- Microwave oven
- Commercial convection oven for reheating
- Many 15-amp electrical circuits
- Ice machine with 80-pound capacity

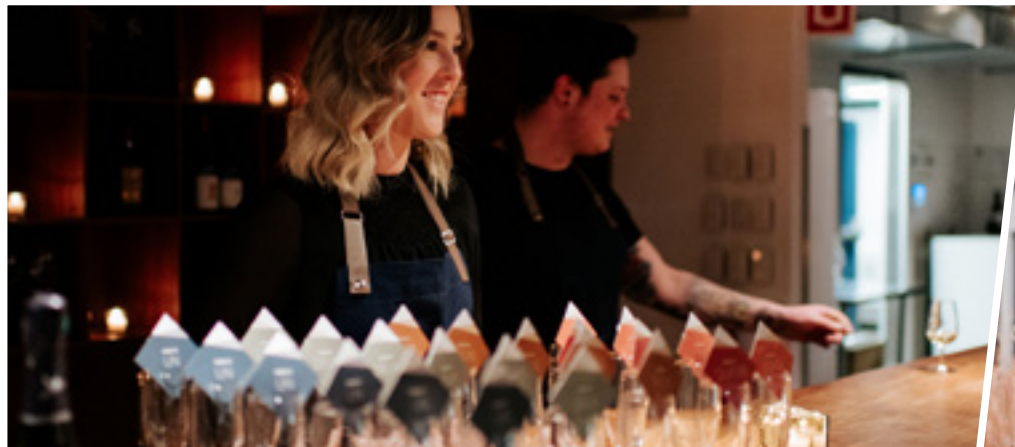
## Sound system

- 250-watt loudspeakers (5)
- 400-watt frequency subwoofers (2)
- 3 XLR line level sound system connections (computer, audio reader, DJ console) located on each of the outside walls
- 1 line level sound system connection (computer, audio reader) set at the 1/8 jack format system
- 2 wireless wand-type microphones
- 90-watt loudspeakers outside (2)

Please note that any furniture, sound system, material, equipment or additional service is not provided but the Parc's staff can assist you and offer recommendations.

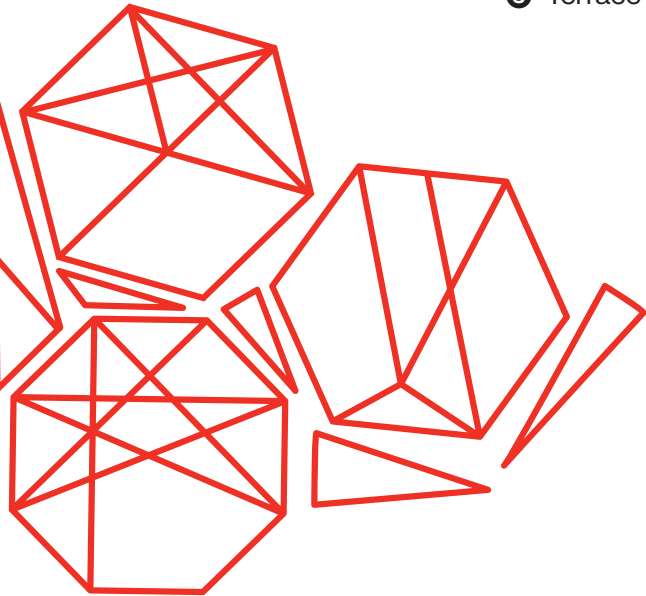
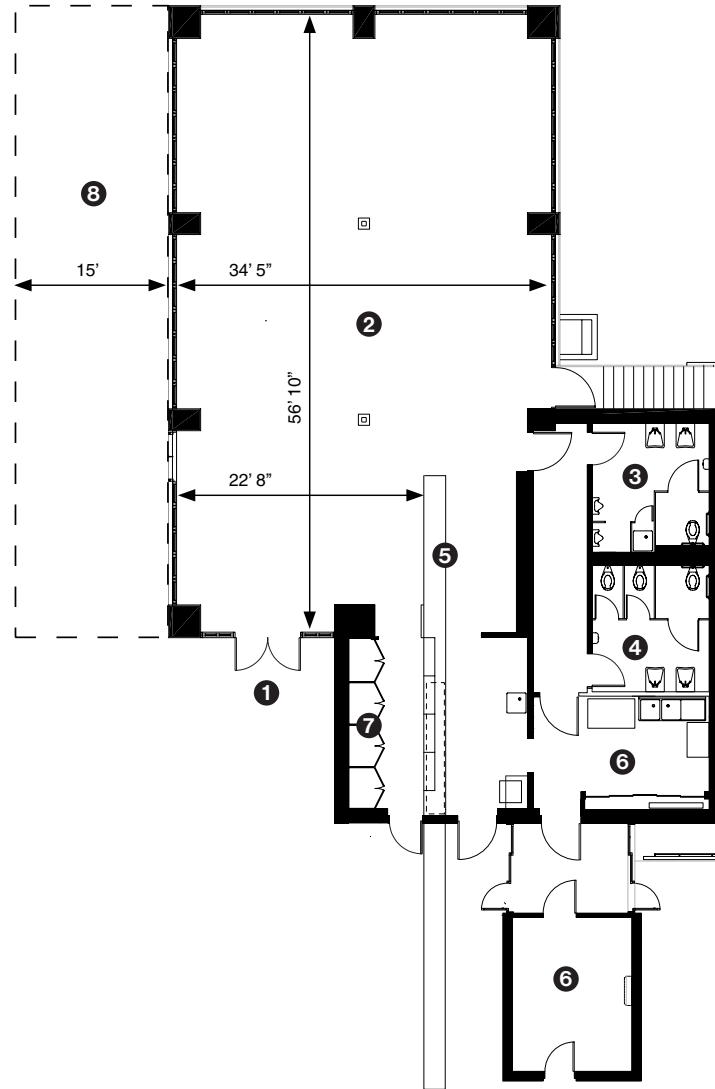
Visit by appointment only, from Monday to Friday between 9:30 a.m. and 4 p.m., based on the hall's availability.

For further information about the activities and events presented at Parc Jean-Drapeau, please go to our website [parcjeandrapeau.com](http://parcjeandrapeau.com)



## Hall layout

- ① Main entrance
- ② Hall
- ③ Washrooms - Men
- ④ Washrooms - Women
- ⑤ Bar
- ⑥ Catering area
- ⑦ Cloakroom
- ⑧ Terrace



## Information

Halls rental service  
Parc Jean-Drapeau  
1, circuit Gilles-Villeneuve  
Montréal (Québec) H3C 1A9  
514 872-9013  
[locations@parcjeandrapeau.com](mailto:locations@parcjeandrapeau.com)



Parc  
**Jean-Drapeau**

